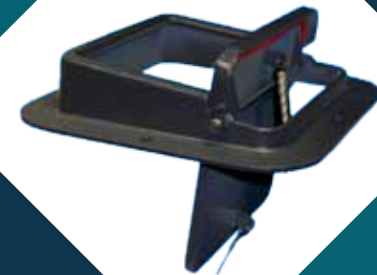


WHY DOES A HOME WITH A FIREPLACE HAVE HIGHER HEATING BILLS?

Hot air rises: Your heated air leaks out any exit it can find. When this happens, cold outside air is drawn in to make up for the lost heated air. The fireplace is like a giant straw-sucking the heated air from your house. This is like leaving a window open all year round!




SEAL TIGHT
chimney damper



**SAVE ON
UTILITY COSTS**

**FOUR SEASON
PROTECTION**





SEAL TIGHT

HIGHER OPENING / BETTER DRAFTING

SMALLER HINGE / REDUCED LEAKS

HAND POURED GASKET / PROTECTED

FROM ELEMENTS

LOW PROFILE / VIRTUALLY INVISIBLE

**YOU'LL SAVE
MONEY AND
STAY WARMER!**



The SEAL TIGHT damper is a low-profile top mounted damper that also serves as a chimney cap. This makes it ideal for historic homes where a chimney cap might affect its aesthetic appeal.

A tight fitting, gasketed chimney damper will help stop heat loss. It's like replacing old leaky storm windows with a tight-sealing energy-efficient window.



Four Season Protection for your chimney.



Serves as a chimney cap when closed.



Easily accessible handle mounts inside of fireplace



Precision engineered mechanism is easier to open and close than throat dampers



Defaults to open position for maximum safety



Two types of gaskets making it superior to similar dampers



Lifetime Warranty

A chimney without a cap allows rain and snow to be absorbed into your chimney's inner flue tile, outer bricks and mortar. Freeze/thaw cycles will compromise the integrity of the structure; mortar loosens and bricks will eventually be dislodged. Sometimes the front facing of the bricks will pop off. Top mount fireplace dampers also act as a chimney cap to keep birds, animals and even insects out of your chimney.